



GREEN MONSTER Manufacturing, LLC

The Industry Leader for over 18 years

Professional Tools for Tent Installers



IS THERE A MONSTER IN YOUR TOOLBOX?



Proud Member Of



ILOVEMYMONSTER.COM

11 Vreeland Ave., Elmsford NY 10523

914-592-1801

STAKE PULLER



LS 1200 HAUDRAULIC STAKE PULLER

- ✓ Pulls all brands of stakes, even stakes in bars!
- ✓ All types of surfaces! Blacktop, Grass, Hardpan
- ✓ Compact design, safety shut off, flat free tires
- ✓ Honda 5.5 HP engine
- ✓ 2" hydraulic piston delivering 6,200 lbs. of Pull
- ✓ Patented design
- ✓ Weight: Approx. 320 lbs.



LS2200 SELF PROPELLED STAKE PULLER

- ✓ Pulls all brands of stakes, even stakes in bars!
- ✓ All types of surfaces! Blacktop, Grass, Hardpan
- ✓ Compact design, safety shut off, flat free tires
- ✓ Variable speed up to 3.2 mph
- ✓ Honda 5.5 HP engine
- ✓ 2" hydraulic piston delivering 6,200 lbs. of pull
- ✓ Patented design
- ✓ Weight: Approx. 330 lbs.

DRIVERS



#RHINO—TSD TENT STAKE DRIVER

- ✓ Equipped with Rhino's CIS vibration dampening
- ✓ Padded grip for handling comfort
- ✓ Comes with Rhino-tent stake chuck installed
- ✓ Honda 4 cycle OHV engine
- ✓ Top throttle installed for easier tent stake driving with less bending for the installer
- ✓ Driving stake from the top helps keep the unit centered squarely on the stake
- ✓ Weight: Approx. 44 lbs. (19.9kg)

✓ **Rhino Transport Cart Available!**



#GM 20 SKIDRIL STAKE DRIVER

- ✓ On-Off simplicity
- ✓ Honda 4 cycle OHV engine
- ✓ Drives 2—1/2 & 3" stakes +
- ✓ Air cushion dampening for virtually no recoil
- ✓ High fuel efficiency 1 qt/hr.
- ✓ Modular design
- ✓ 1 man stake driving
- ✓ Weight: Approx. 38lbs. (17.2kg)

Authorized Stocking Dealer
Authorized Repair & Warranty Center

ACCESSORIES

#GMO77 MONSTER TRUCK

- ✓ 15" pneumatics & wheel guards
- ✓ Type: P-Handle Weight (lb.): 54
- ✓ Load Rating (lb.): 1000
- ✓ Height (in): 62
- ✓ Depth (in): 25 3/4
- ✓ 26 Toe Plate Dimensions: (in) 10 1/2
- ✓ Features: wheel guards
- ✓ Weight (lb): 8.5



#GMO78 Monster Truck with Nose Plate Extension

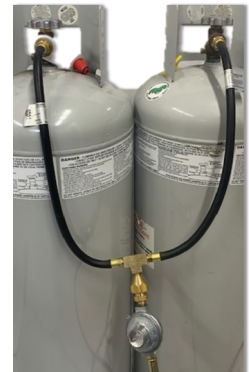
#GM FP: Fiesta Paw

- ✓ 6" non-marring rubber pad customized for the Anchor Fiesta tent leg
- ✓ Designed to protect vulnerable surfaces from abrasion
- ✓ Can help prevent rust stains



#GM1047 PROPANE TANK MANIFOLD

- ✓ Reduces risk of tank freezing
- ✓ Heaters run more efficiently
- ✓ Manifold multiple tanks together
- ✓ 20" Hose
- ✓ POL w/ "O" Ring Connector



#GM1049 Whip Assembly 2 Tank

- ✓ 20" Hoses with POL "O" Ring Connector

#GM 1206 HOGAN JAW



#GM 1SJ-1 STRUCTURE



#GM 1SJ-1 STRUCTURE



WRENCHES



#1087 9/16" & 5/8" FIESTA & BIL -JAX WRENCH

- ✓ Reversible long handle with drift pin
- ✓ Great for aligning holes
- ✓ Use on tents & staging



#1031 11/16" & 3/4" NAVI TRAC WRENCH

- ✓ Reversible long handle with drift pin
- ✓ Great for aligning holes
- ✓ Use on tents and 1/2" Bolts



#1024 24MM STRUCTURE

- ✓ Reversible, perfectly balanced
- ✓ Aligns structures & rafters
- ✓ Tightens frame bolts



#1030 30MM STRUCTURE



#1085 1 1/8" WEB WRENCH

- ✓ Reversible long handle for leverage
- ✓ Tapered end to release ratchets
- ✓ Use on webs & structures



#GMLP WRENCH HOLDER

- ✓ Heavy duty leather
- ✓ Holds all size wrenches



GREEN MONSTER Manufacturing, LLC

The Industry Leader for over 18 years

Professional Tools for Tent Installers



Time for a Tune up? Show your Monster a little love!

Upgrade early models! Parts list available online!

-
- | | | |
|---------------------|-------------------|---------------------|
| ♦ Engine oil | ♦ Handle grips | ♦ Tire assembly |
| ♦ Engine air filter | ♦ Hydraulic oil | ♦ Wheel bearing |
| ♦ Spark plug | ♦ Hydraulic hoses | ♦ Handle update kit |
| ♦ Control cable | ♦ Oil breather | |

IS THERE A MONSTER IN YOUR TOOLBOX?